

Product information



Carcase finish

The **carcase** and **removable shelves** are made from **19 mm thick** three-layer quality particle board (E1), manufactured with a high-quality direct laminate coating on both sides according to eco-friendly principles and in line with the guidelines of the German Furniture Association. The coating is highly resistant and easy care. Special joining technology affords the carcase high rigidity.

The back panel thickness is 0.5 cm.

Carcase front edges

The carcase front edge is provided with a top quality thick edge and as a result is highly impact resistant.

With regard to visible sides in lacquer, high gloss or veneer this carcase front edge is supplied in the colour of the visible side.



Visible carcase sides

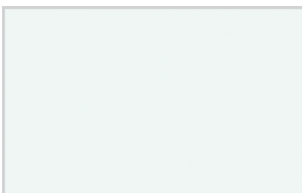
Visible outer sides in repro (colour group R) are supplied free of charge.

This must be clearly indicated on the order and marked on the drawing.

Visible sides in the colour groups lacquer (L), high gloss (H) or veneer (F) are supplied at extra charge.

Removable shelves

Our 19 mm thick removable shelves are height-adjustable and come with **sturdy metal shelf supports** and an additional anti-tilt safety device to prevent them from falling out.



Carcase 176 Snow

Carcase versions

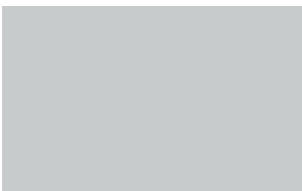
Carcase finish 176 snow

Edge finish choice of :

- Snow 176

- Aluminium 3D 925

Finish of visible carcase side: variable

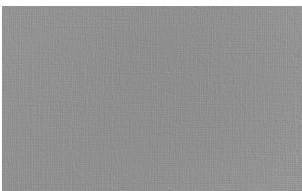


Edge 925 Aluminium 3D

Carcase finish 174 linea (slight linen texture)

Finish of edge: fix 174 linea

Finish of visible sides: fix 174 linea



Carcase 174 Linea

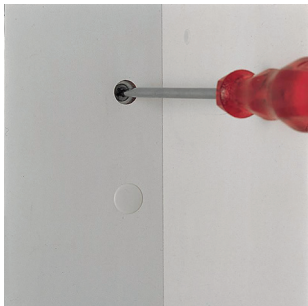


Hinges

Metal clip hinges incl. soft<motion

These metal hinges are extremely durable and sturdy (extended fatigue test at LGA Nürnberg). The 107° opening angle (or 150° in some specific units) allows easy access to the unit interior. The locking mechanism of the articulated arm provides two-fold safety and security and thus satisfies the highest quality standards. Clip hinges greatly facilitate installation thanks to the tool-less front mounting, trouble-free height, depth and lateral adjustment plus convenient, quick door change.

soft<motion closes the doors gently and quietly - the optimum closing action.



Hanging systems for wall units

The high-quality hanging system offers an array of benefits in every respect. The **steel construction** ensures optimum strength and security. It includes an easy-to-use, installer-friendly adjustment function. The system impresses also in terms of appearance: the hanging brackets are not visible inside the unit but are located behind the back panel.

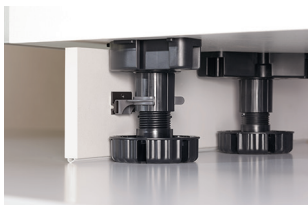
Plinth system

Base units and tall units are equipped with a height-adjustable and installation-friendly plinth system. Every individual unit can be precisely adjusted on site. The plinth panel comes with a sealing strip at the point of contact with the floor.

A plinth height ranging from 7 to 23 cm is available in full cm increments. Each plinth foot can be adjusted from the inside (upwards + 2 cm, downwards - 1 cm).

Plinth panels in repro (colour group R) are supplied free of charge.

Plinth panels in the colour groups lacquer (L), high gloss (H), stainless steel (E) or veneer (F) are supplied at extra cost.



Product information



(III. LEGRABOX silk white)

LEGRABOX (interior equipment 207 / 607)

Our drawer and pull-out system stands out on account of its sleek, linear appearance. The minimalistic design of the drawer box featuring 12.8 mm ultra-slim drawer sides in **silk white** or **orion grey** underscores the elegant aesthetics of the LEGRABOX.

A special cabinet profile ensures a high quality of motion. The runner system offers many outstanding features, such as the synchronized smooth running action for an even higher quality of motion, alongside a dynamic load-bearing capacity of 40 kg for drawers and 70 kg for pull-outs.

Our drawers and pull-outs across all the kitchen ranges include integrated automatic closing and a pull-out safety stop.

The gentle braking action of **soft<motion** ensures automatic soft and silent closing of drawers and pull-outs. The standard full extension system offers optimum access in daily use. Maximum volume in the extension area is achieved thanks to the extra-high steel back panel in silk white.

Note: For technical reasons some items are not available with a high back panel or with soft<motion.



(III. LEGRABOX orion grey)

Finishes:

LEGRABOX silk white = interior equipment 207

LEGRABOX orion grey = Interior fittings 607



(III. non-slip mat **white TAM** ...)

Non-slip mats

All drawers and pull-outs as well as larger units and carousel units are supplied **as standard** with a non-slip mat in the colour of the pull-out's interior fittings.

Possible combination

Ordering example: LEGRABOX in silk white with non-slip mat in grey - please order the non-slip mat in addition as a separate item.



(III. non-slip mat grey **TAG** ...)

Separate item

Non-slip mat white = **TAM...**

Non-slip mat grey = **TAG...**

Product information

Load capacities

Drawers

Carcase depth
35 cm (40 kg track)
46 cm (40 kg track)
56 cm (40 kg track)
71 cm (70 kg track)

Load capacity

Carcase width up to 60 cm
35 kg
34 kg
33 kg
61 kg

Carcase width 61 - 120 cm
31 kg
30 kg
29 kg
59 kg

Pull-outs

Carcase depth
35 cm (40 kg track)
46 cm (40 kg track)
56 cm (70 kg track)
71 cm (70 kg track)

Load capacity

Carcase width up to 60 cm
33 kg
32 kg
56 kg
58 kg

Carcase width 61 - 120 cm
30 kg
29 kg
52 kg
51 kg

Corner units

Carousel shelves for UEK ...
Le-Mans half round swing trays
Half round swing trays (UEV / UEAV)

Load capacity

20 kg per tray
25 kg per tray
15 kg per tray

Pull- out larder units

Base units 15 cm wide (UAA)
Base units 15 cm wide (UAB / UAH)
Base units 30 cm wide (UVA)
Base units 30 cm wide (ULVCA)
Tall units (HV ...)
Tall units (HVC ...)
Tall units (HTC ...)
TANDEM solo
Tandem
TurnMotion

Load capacity

12 kg
10 kg
28 kg
28 kg
120 kg
120 kg
40 kg
16 kg per tray
4 kg / 10 kg per tray
20 kg per tray

Removable shelves

30 cm wide
40 cm wide
50 cm wide
60 cm wide
80 cm wide (post)
90 cm wide (post)
100 cm wide (post)

Load capacity

11 kg
11 kg
11 kg
11 kg
19 kg
19 kg
19 kg

Other units

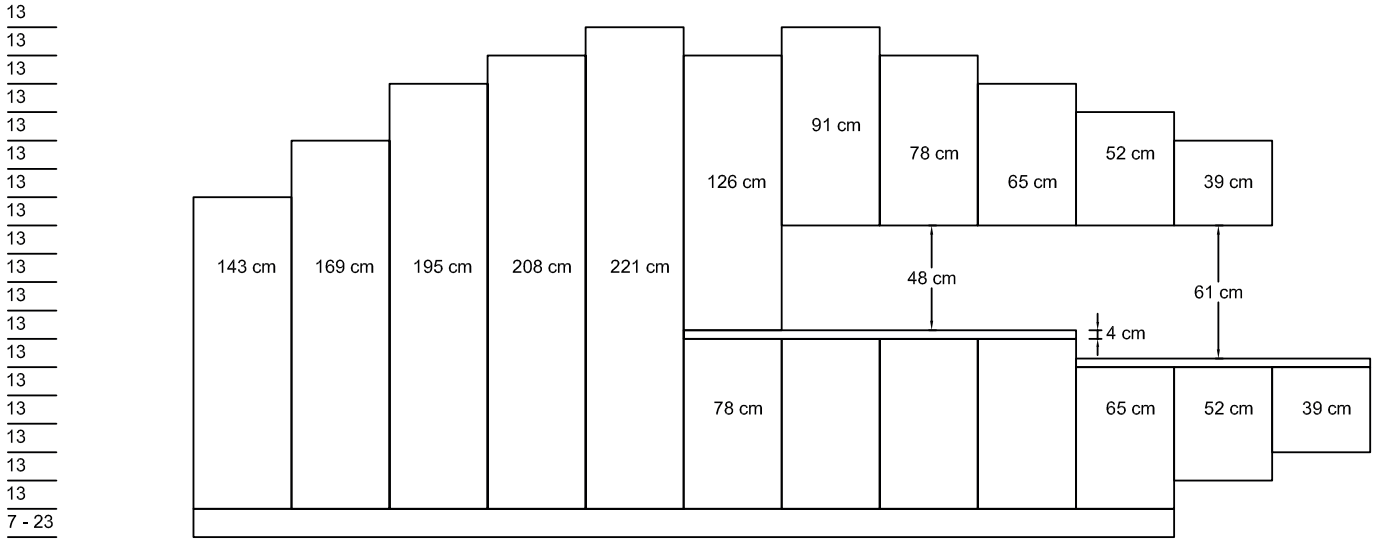
Swing-out appliance platform (ULMS)
Pull- out tabletop (UZST)
Metal board (NSBM)

Load capacity

8 kg
25 kg
10 kg per tray

Product information

Carcase height



Carcase depths

